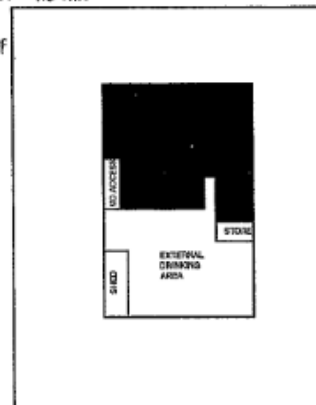


EXISTING GROUND FLOOR PLAN

KEY

- ⊗ 9 LITRE WATER EXTINGUISHER
- ⊙ ILLUMINATED 'EXIT' SIGN WITH DIRECTIONAL ARROW
- ⊖ FIREBELL
- ☐ CIGARETTE VENDING MACHINE
- ☐ FRUIT MACHINE
- ☐ JUKEBOX
- 117 CHAIRS
- 25 TABLES
- ☐ CONSUMPTION OF ALCOHOL

CONSUMPTION OF
ALCOHOL/ALL
LICENSABLE
ACTIVITIES



REV	DATE	DETAILS	DRAWN



ROMANS
Surveyors

4 KING STREET LANE, WINNERGH, BERKSHIRE, RG41 2AB.
TELEPHONE 0118 936 6699
28 THE AVENUE, SOUTHAMPTON, HAMPSHIRE, SO17 1XX.
TELEPHONE 03300 820110
84 HEATH ROAD, THICKERHAM, MIDDLESEX, TW1 4BW.
TELEPHONE 0308 288 0330
E-MAIL ROMANS@ROMANS.CO.UK
WWW.ROMANS.CO.UK

ON BEHALF OF

Punch Taverns

PROJECT TITLE
**Fox and Goose, Greets Green
West Bromwich, B70 9EW**

DRAWING TITLE Existing Floor Plans	SCALE 1:100
DRAWN AS	DATE 21st June 2005
CHECKED	DWG NO. 867254
	REV 001

ROMANS SURVEYORS ARE PART OF
THE ROMANS GROUP (INCORPORATED)
COMMERCIAL SURVEYORS ARCHITECTURAL
LAND & NEIGHBOURHOOD PLANNING
LETTINGS RESIDENTIAL RELOCATIONS

The
ROMANS
Group

OUTLET NO.
867254

